



拆卸简单，轻松：用于单柜的新型铰链

“用于工业机柜的铰链不仅对灵活性的要求很高，
对稳定性和安全性也有一定的要求。

因此我们开发了一款带系留插销的可拆卸铰链。”
Matthias Velten，区域销售经理



新款铰链，拆卸简单，轻松

拆卸简单，轻松

新款铰链由于简单的装置，
可以让门板的拆卸，变得简单

- 两片门件：上部带滑动功能
- 可拆卸功能

安全，稳固

采用系留插销，增加铰链的安全性

- 插销系留在框件里
- 有系留功能的上部锁定时听得见声音
- 锁闭位置标识清晰
- 开关明显
- 框件的材质是钢。这可以确保即使在门板较重的情况下，稳定性依旧很高
- 固定支架可以在固定位置分散承受力

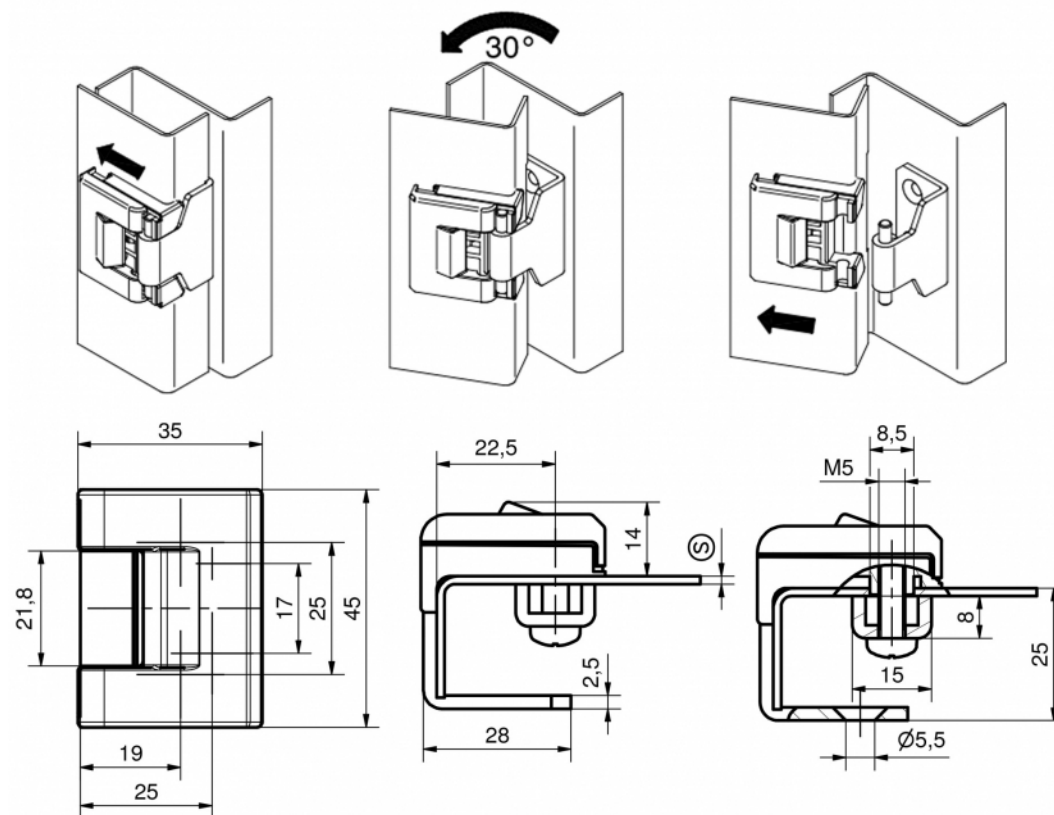
可替换

标准的孔中心距，可以在现有环境下替换成现有的铰链

- 框件的固定尺寸为25mm
- 标准折弯
- 铰链适用于钣金行业，主要用于机柜结构，19寸机柜和机器外壳



- 用于外装门
- 半隐藏铰链
- 门板折弯25mm
- 左右门适用
- 打开角度为180度
- 通过滑动门件到中间位置，可拆卸门板
- 门件可在终端位置听见声响，并清晰可见





材质和表面处理

门件：锌合金，黑色

框件：钢，黑色

桥，螺钉，销轴：钢，镀锌

包含用于门件的固定螺钉

订购选择

产品系列	名称	销轴款式	安装方式	料号	链接
4-155	用于单柜的铰链	系留	螺钉固定	212-9092.00-00000	



Easy and comfortable lift-off: the new hinge for single cabinets

"Hinge solutions for industrial cabinet construction require a high flexibility in combination with stability and security during operation at the same time.

Therefore we developed a lift-off hinge with captive pin."
Matthias Velten, Sales Area Manager



Our new hinge for easy and comfortable lift-off

Easy and comfortable

The new hinge simplifies the lift-off of doors due to the comfortable handling.

- Two-piece door-part: upper part with sliding-function
- Lift-off function

Secure and stable

The captivity of the pin leads to a secure use of the hinge.

- Pin remains captive in the frame-part
- Captive upper part locks audibly in place
- Visible indication of locking position
- Consious opening and closing
- The frame-part made of steel guarantees a good stability even with high door weights
- Fixing bracket for higher force distribution at the fixing

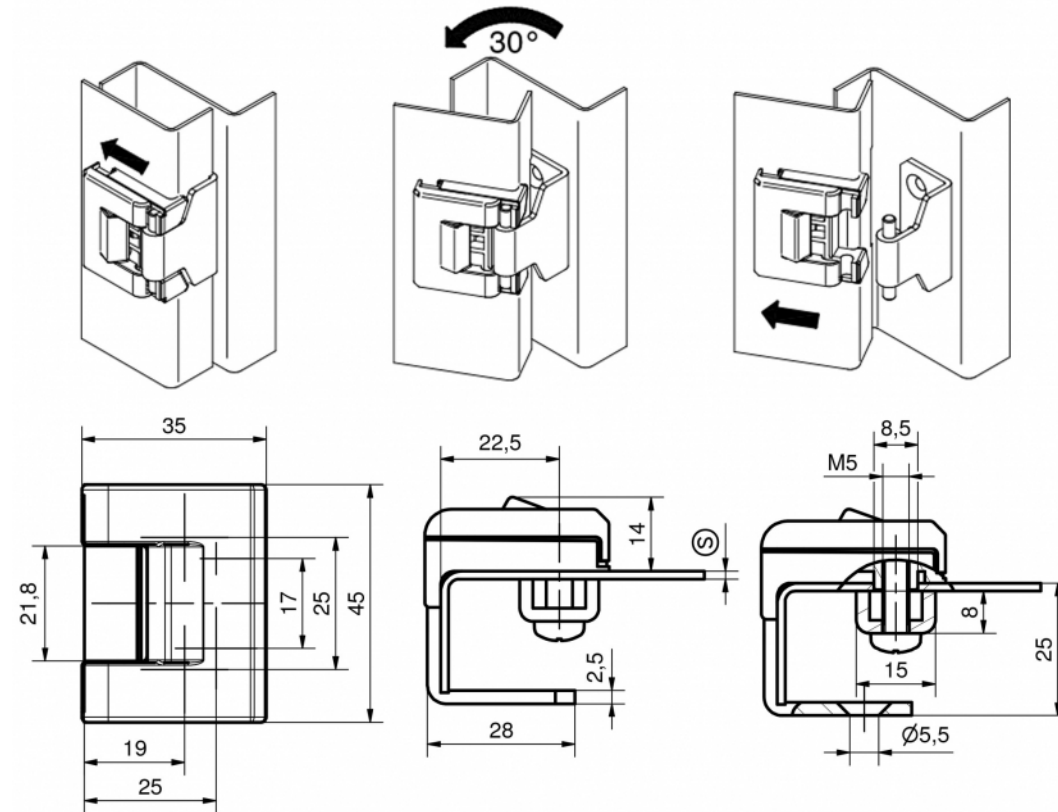
Variable

Common hole centre distance allows easy replacement in existing applications (e.g. dual hook for latches outside of the sealing).

- Fixing dimension of the frame-part 25mm
- For standard bendings
- Above all the hinge is used in sheet metal working industry, mainly in cabinet construction, as well as in 19"-cabinets and machine housings



- For surface mounted doors
- Hinge partly concealed
- Door bending 25mm
- RH / LH application
- 180° Opening angle
- Lift-off of the door by swiping the door part to the middle of the door
- Door-part clicks audible and visible in end position





Material and Surface

Door-part: Zinc die, black

Frame-part: Steel, black

Bridge, screws, pin: Steel, zinc plated

Fastening screws for the door-part included.

Order options

Product system	Description	Pin version	Installation type	Part Number	Link
4-155	Hinge for single cabinet	captive	screw-on	212-9092.00-00000	