

新款桥式拉手，超长设计

“桥式把手广泛地应用在很多领域。在这些领域中，对简易操作的设计，要求比较高。”

因此，我们开发了一款光滑的超长型新款把手，给客户带来最佳便利性。  
Tobias Sohnchen，高级产品经理



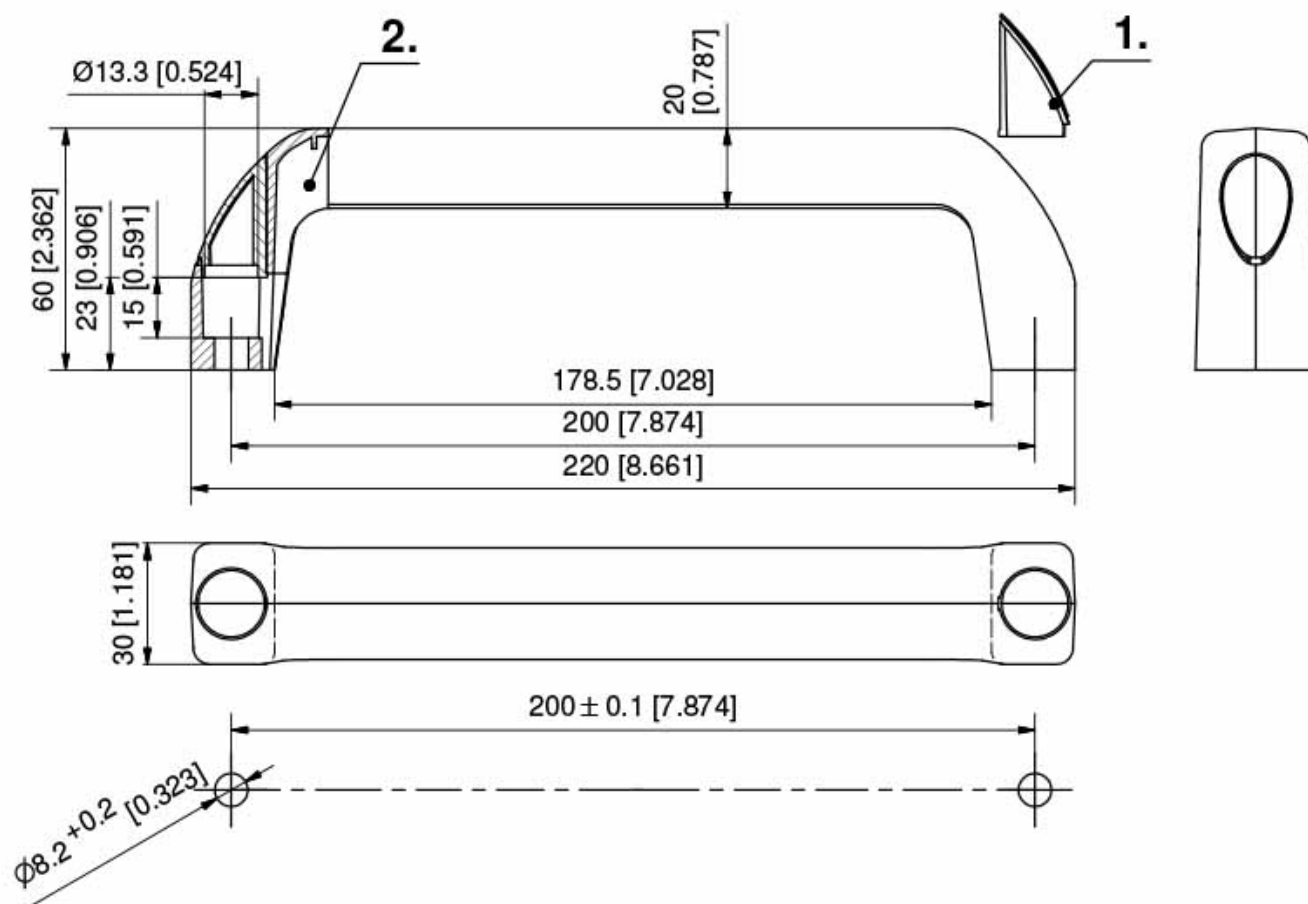
## 桥式把手，用于垂直和水平方向的应用

### 最佳把手长度 - 便于使用

- 封闭式设计
- 由于表面倾斜，边缘圆润，这款产品耐脏，便于清洁
- 紧固螺钉被销轴覆盖，可免工具安装

### 耐用设计，适用于所有行业

- 防腐
- 表面喷漆
- 底面螺纹
- 用M8圆柱螺钉紧固



## 桥式把手

要求



产品优势

## 材料

把手和销轴：PA，银灰（RAL 7001）或黑色亚光

RoHS  
WEEE

订购选择

产品系列	描述	安装方式	L	H	款式	料号	Link
6-1000.01	桥式把手， 银灰	螺钉固定	200	60	银灰色， 带圆柱螺钉M8	352-2151.03-00 000	
6-1000.01	桥式把手， 黑色亚光	螺钉固定	200	60	黑色亚光， 带圆柱螺钉M8	352-2151.03-00 001	

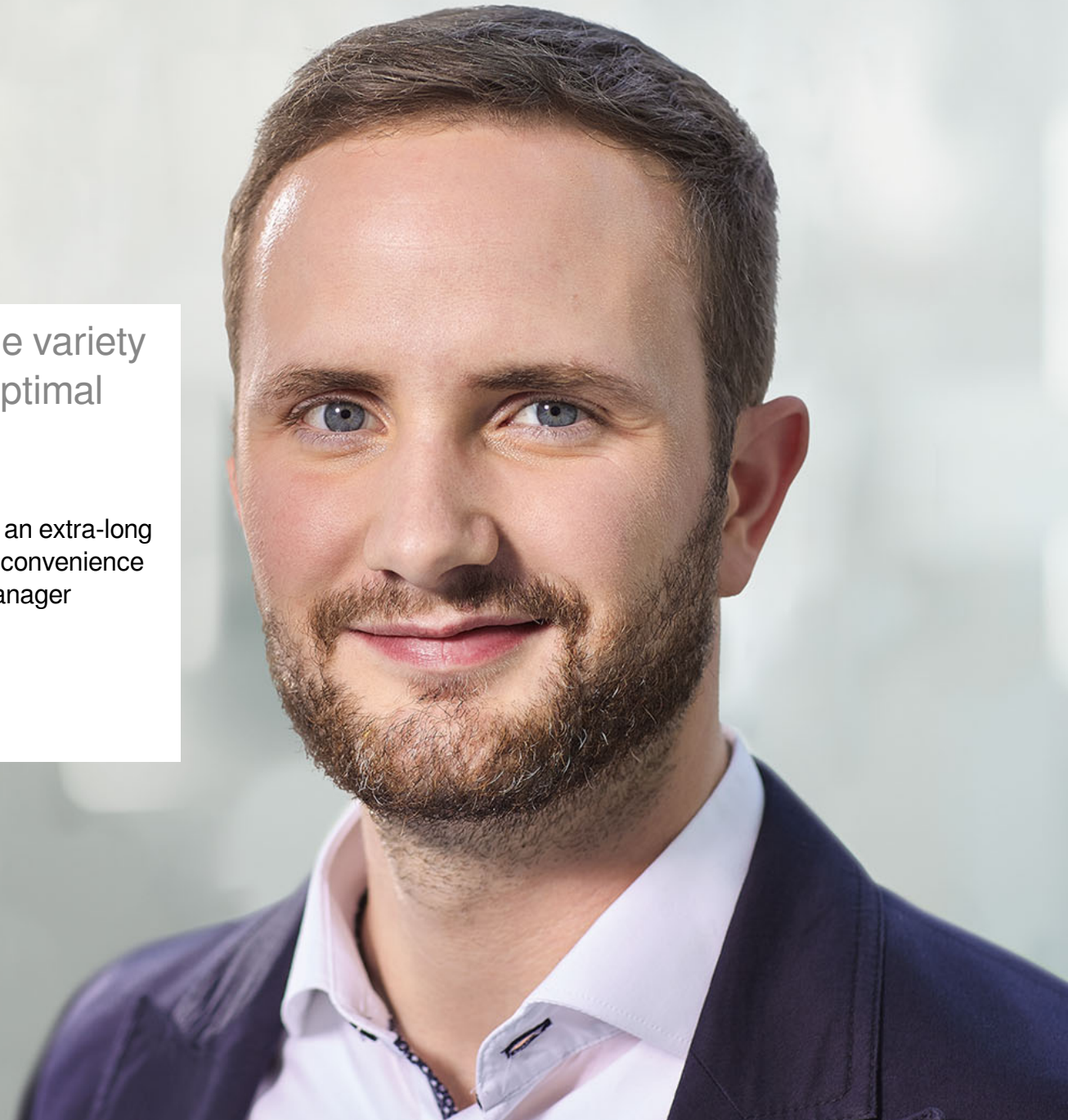




The Bridge Handle with a newly designed length

“Bridge handles are used in a wide variety of applications which require an optimal design for easy operation.

Therefore, we developed a sleek, new design with an extra-long handle to provide the ultimate level of comfort and convenience for the user.” Tobias Söhnchen, Junior Product Manager





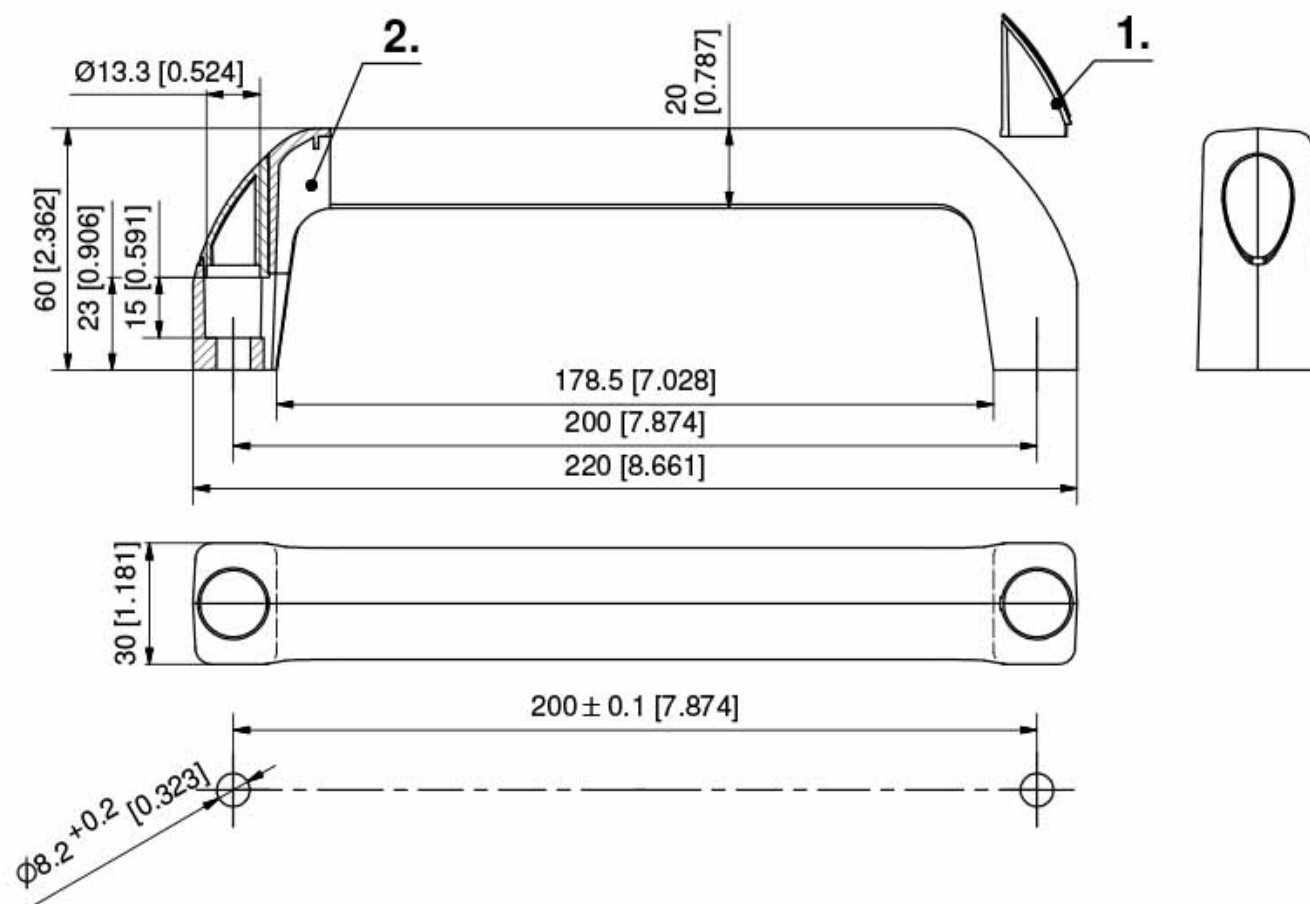
# The Bridge Handle for vertical and horizontal applications

Optimal handle length – easy to use

- Closed design
- Resistant to dirt and easy to clean due to slanted surfaces and rounded edges
- Fastening screws are covered by plugs which are assembled without tools

Durable design for every application

- Corrosion-resistant
- Painted surface
- Ribbing on the underside
- Fastening with cylinder head screws M8



## Material

Handle and plug: PA, silver-grey (RAL 7001) or black  
matte

RoHS  
WEEE

## Order options

Product system	Description	Installation type	L	H	Version	Part number	Link
6-1000.01	Bridge Handle, silver-grey	screw-on	200	60	silver-grey, for cylinder head screws M8	352-2151.03-00 000	►
6-1000.01	Bridge Handle, black matte	screw-on	200	60	black matte, for cylinder head screws M8	352-2151.03-00 001	►